

PEBX-EE/PEBX-SE Non-Contact Rotary Position Sensor



- Patented true non-contact position sensing
 - 0.5" (12mm) gap between sensor and application
 - 0.10" (2.5mm) center alignment
 - 30° planar tilt
- Totally sealed IP69K (connector dependent)
- LED indicators for power and output feedback
- Incremental or Absolute position
- Outputs: Quadrature, Analog, J1939, Analog - Voltage Output
- Detects rotation through non-ferrous barriers

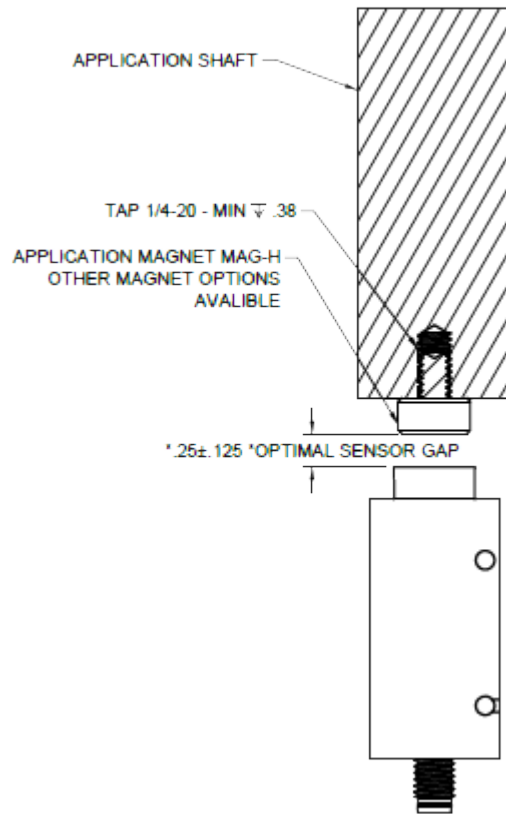
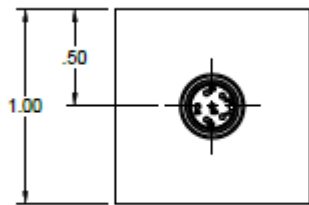
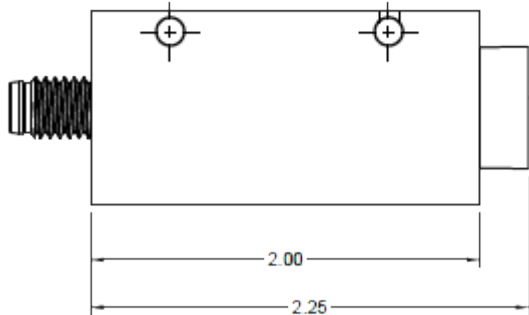
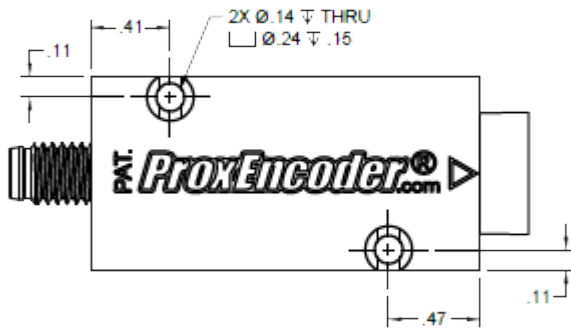
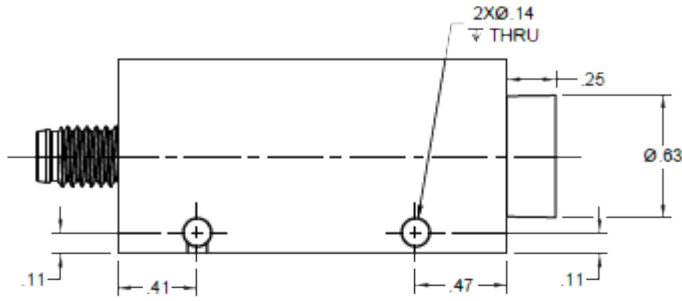
ELECTRICAL	Outputs	B-PPR-SEPP : 8 bit Quadrature Incremental @ 64 Pulses Per Revolution B-1939 : 8 bit J1939 256 Count Absolute Single-Turn V1 : 8 bit voltage output w/ custom voltage and angle range I1 : 8 bit voltage output w/ custom voltage and angle range
	Input Power	6 to 30 VDC at approx 60 mA max, not including output loads
	Electrical Protection	Over-voltage, reverse-voltage, output short-circuit protected
	LED Indicators	Power and communication
	Connections	M8, Flying Lead Cable or Shield Flying Lead
	Resolution	5.625° (8 bit 64 positions across 360°)
	Accuracy	0.6°
	Hysteresis	0.18°

MECHANICAL	Housing Diameter	0.71" (18mm)
	Housing Material	Aluminum (Red anodize standard) or Stainless Steel
	Housing Height	2.00" (50.8mm)
	Mounting	18mm Threaded
	Weight	0.81 oz (22.8 grams) without mounting nuts
	Magnet / sensor gap*	Standard 0.5" (12mm)
	Rated planar tilt / axial gap*	Planar 30° (Max 45°) / Axial 0.1" (2.5mm)(Max 0.16" [4mm])

* Non-contact tolerances rated using MAG-RING 1/4x20 magnet accessory.

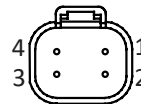
ENVIRONMENTAL	Operating Temperature	-30° to +80° C
	Storage Temperature	-40° to +80° C
	Humidity	100%
	Shock	400g/6ms (MIL STD 202)
	Vibration	5 to 3000 Hz, 20g (MIL STD 202)
	Protection Class	IP67 with Standard M8 (IP69K Optional)

ORDER TABLE	Code 1: Housing Style	Code 2: MagElec		Code 3: Connection		Code 4: Modifiers	
		PEBX-EE 2" x 1" x 1" box Square Mount Housing End Exit	B-0064-SEPP	64 pulse single ended quadrature output	M8	6 pin M8 male	M1
V1			0-5VDC across 0-360 absolute position analog output	C72	72" flying lead cable	51	Housing material Red Aluminum
PEBX-SE 2" x 1" x 1" box Square Mount Housing Side Exit		I1	4-20mA across 0-360 absolute position analog output			54	Housing material Stainless Steel
		B-1939	256 count absolute single-turn J1939 output			101	Sense element orientation side sense orientation



GENERAL PIN OUTS

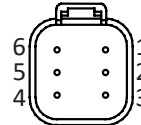
**DT04-4P MALE
FACE VIEW**



DT04-4P J1939 OUTPUT

- 1 = YEL = CAN HIGH
- 2 = GRN = CAN LOW
- 3 = RED = +VDC (VIN)
- 4 = BLK = COMMON/GROUND

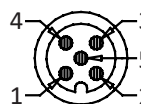
**DT04-6P MALE
FACE VIEW**



DT04-6P J1939 OUTPUT

- 1 = YEL = CAN HIGH
- 2 = GRN = CAN LOW
- 3 = RED = +VDC (VIN)
- 4 = BLK = ADDRESS GROUND
- 5 = WHT = ADDRESS PROG. RESISTOR
- 6 = BLK = COMMON/GROUND

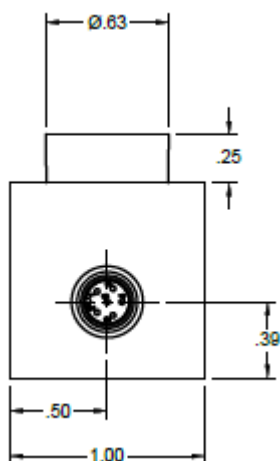
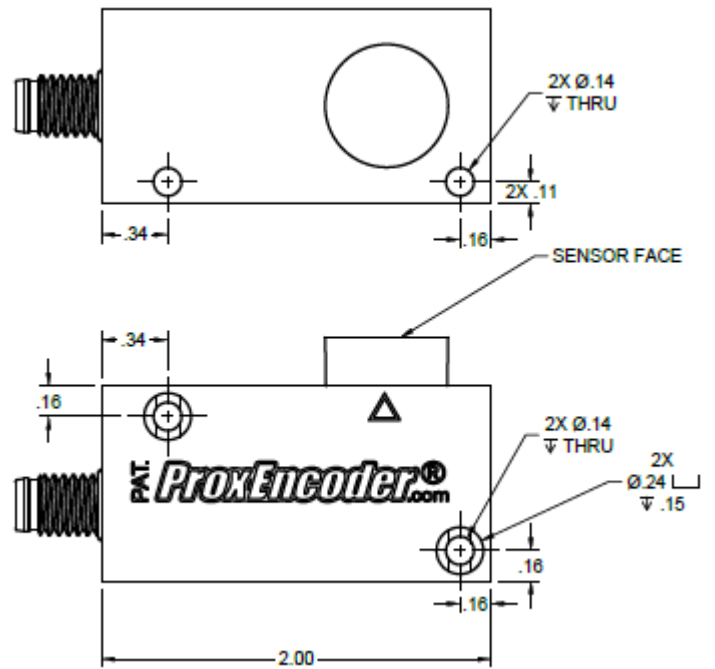
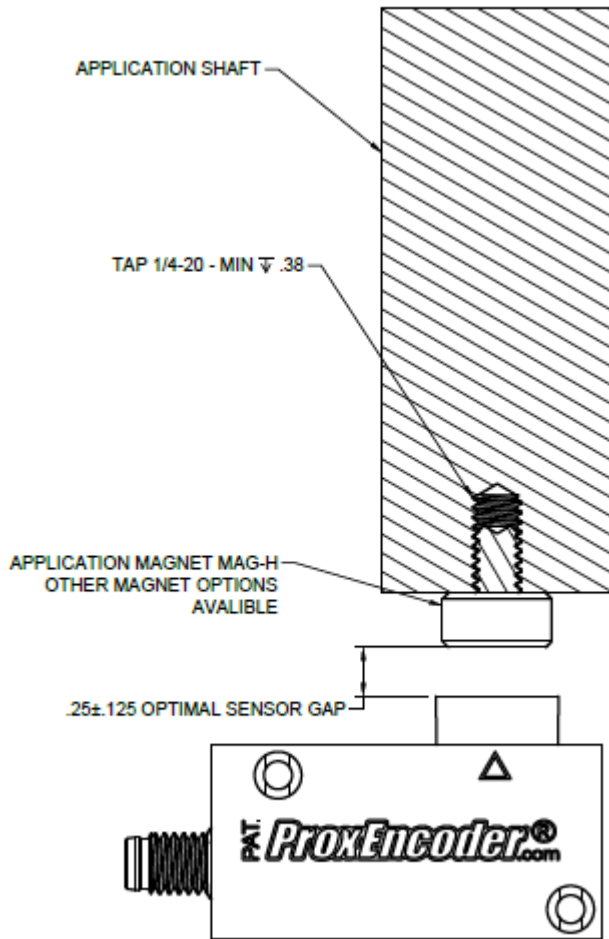
**M12-5P MALE
FACE VIEW**



**M12-5P AND 5 CONDUCTOR
CABLE J1939 OUTPUT**

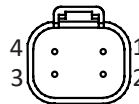
- 1 = BRN = +VDC (VIN)
- 2 = WHT = CAN HIGH
- 3 = BLUE = COMMON/GROUND
- 4 = BLK = CAN LOW
- 5 = GRY = OPTIONAL ADDRESS PROGRAMMING RESISTOR

*Dimensions informative only
For most recent dimensions please consult factory*



GENERAL PIN OUTS

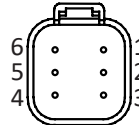
**DT04-4P MALE
FACE VIEW**



DT04-4P J1939 OUTPUT

- 1 = YEL = CAN HIGH
- 2 = GRN = CAN LOW
- 3 = RED = +VDC (VIN)
- 4 = BLK = COMMON/GROUND

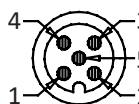
**DT04-6P MALE
FACE VIEW**



DT04-6P J1939 OUTPUT

- 1 = YEL = CAN HIGH
- 2 = GRN = CAN LOW
- 3 = RED = +VDC (VIN)
- 4 = BLK = ADDRESS GROUND
- 5 = WHT = ADDRESS PROG. RESISTOR
- 6 = BLK = COMMON/GROUND

**M12-5P MALE
FACE VIEW**



**M12-5P AND 5 CONDUCTOR
CABLE J1939 OUTPUT**

- 1 = BRN = +VDC (VIN)
- 2 = WHT = CAN HIGH
- 3 = BLUE = COMMON/GROUND
- 4 = BLK = CAN LOW
- 5 = GRY = OPTIONAL ADDRESS PROGRAMMING RESISTOR