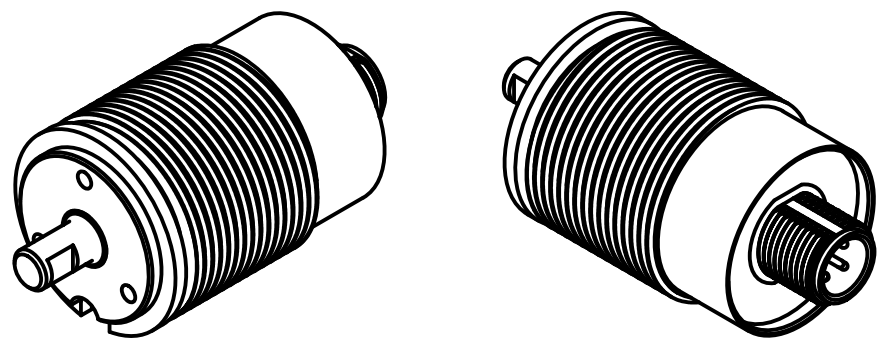
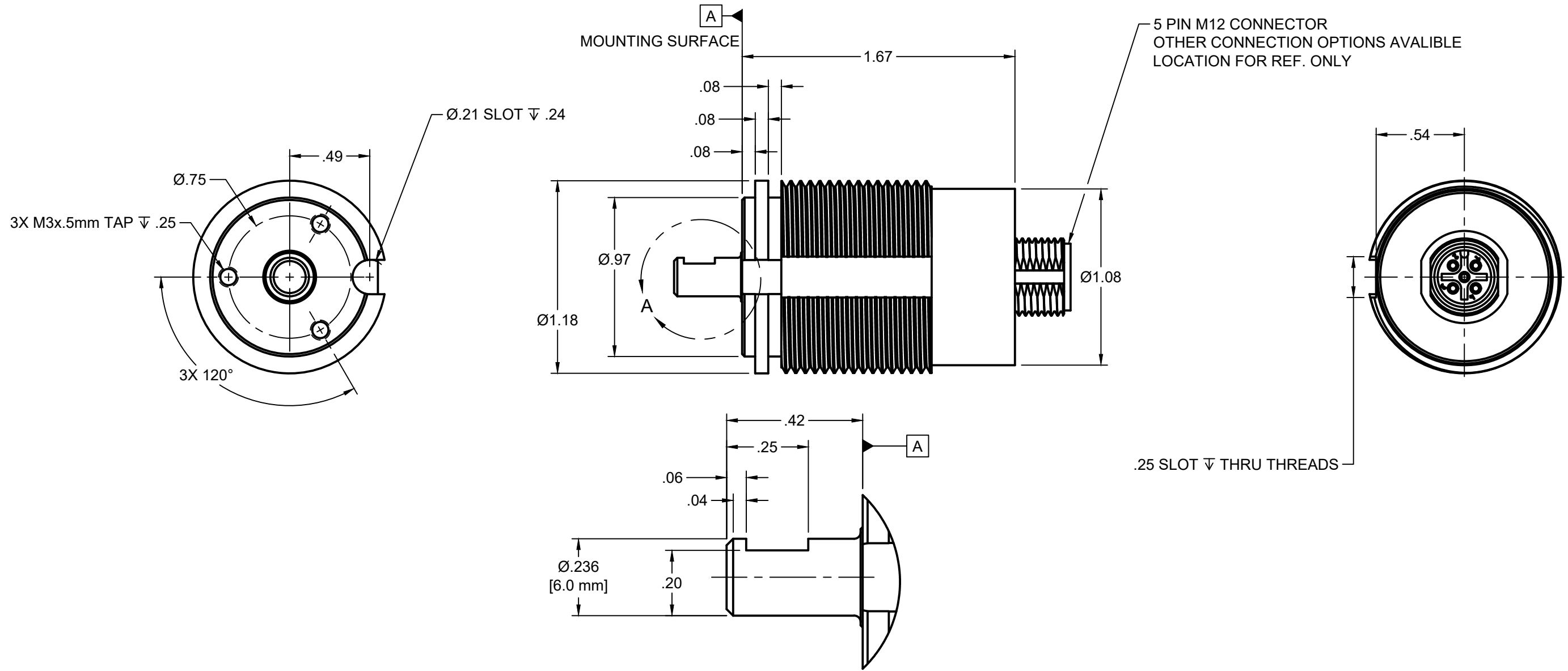


INTERFACE DETAILS AND NOTES:

- DO NOT APPLY OUTPUT FORCE DIRECTLY TO ENCODER SHAFT.
UTILIZE A COUPLER IN ORDER TO PRESERVE INTERNAL BEARING INTEGRITY AND PERFORMANCE.



ISOMETRIC VIEWS
SCALE:NONE

CONFIDENTIAL - ALL RIGHTS RESERVED DISCLOSURE OR DUPLICATION PROHIBITED	DRAWN: DAVID WATSON	DATE: 6/28/2023	JORAL WWW.JORALLC.COM
	CHECKED: T.WOLFF	APPROVED: 6/12/2024	
UNLESS OTHERWISE SPECIFIED: DIMENSIONS ARE IN DECIMAL INCH	PART #: J130-CUST-ASSY		DESCRIPTION: J130 ENCODER
ALL DIMENSIONS ARE REFERENCE	EPICOR #:	REV. 0	SCALE: 3:2 SHEET: 1/1