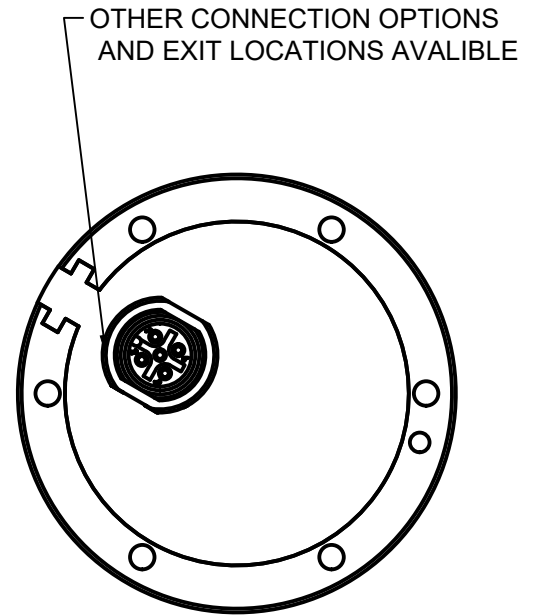
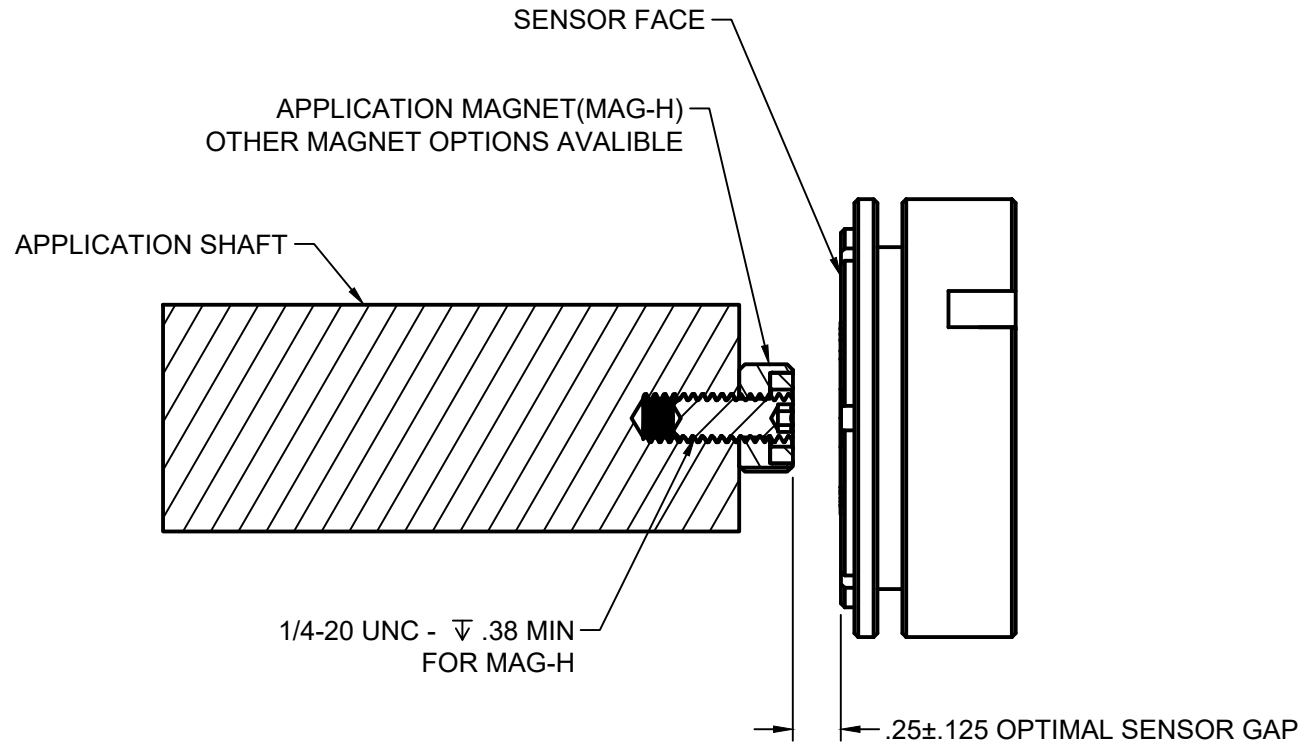
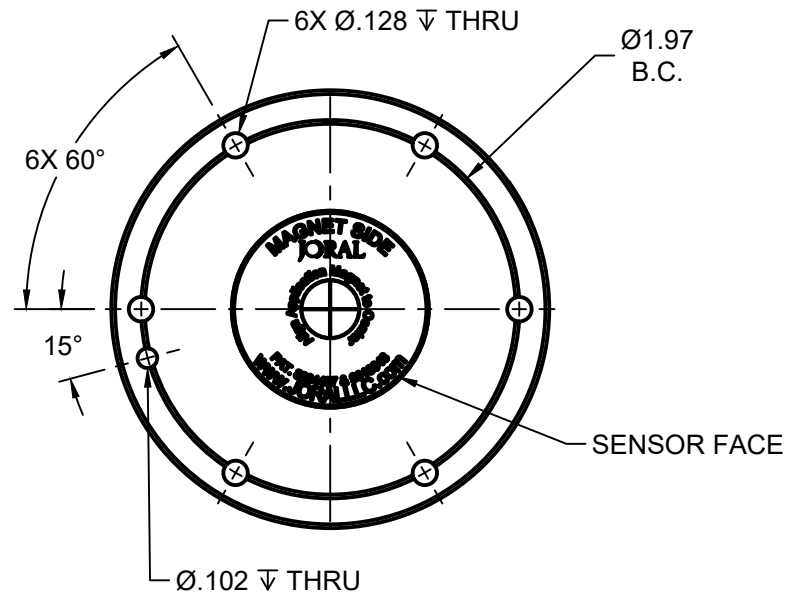
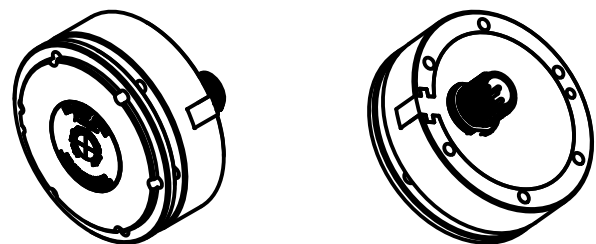
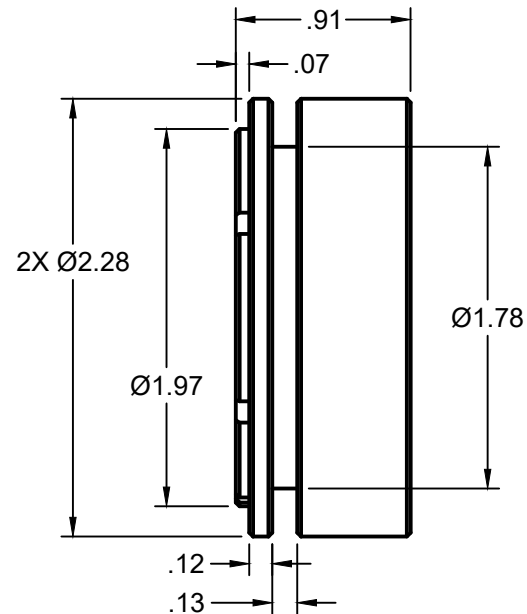


INTERFACE DETAILS AND NOTES:

1. APPLICATION SHAFT Ø.375" MINIMUM WHEN USING MAG-H APPLICATION MAGNET. TAP 1/4-20 A MINIMUM DEPTH OF .375".
2. 0.25" SENSOR GAP DISTANCE IS OPTIMAL FOR NORMAL INSTALLATION. THIS IS DEPENDNT ON MOUNT AND MATERIALS.



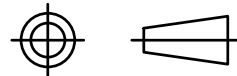
FRONT DETAIL VIEW



ISOMETRIC VIEWS  
 SCALE:NONE

CONFIDENTIAL - ALL RIGHTS RESERVED  
 DISCLOSURE OR DUPLICATION PROHIBITED

UNLESS OTHERWISE SPECIFIED:  
 DIMENSIONS ARE IN DECIMAL INCH



ALL DIMENSIONS ARE REFERENCE

DRAWN:  
 DAVID WATSON

CHECKED:  
 T.WOLFF

PART #:

EPICOR #:

DATE:  
 7/12/2023

APPROVED:  
 6/17/2024

REV. SIZE:  
 B



WWW.JORALLC.COM

DESCRIPTION:

HP58 ENCODER

SCALE:  
 1:1

SHEET:  
 1/1