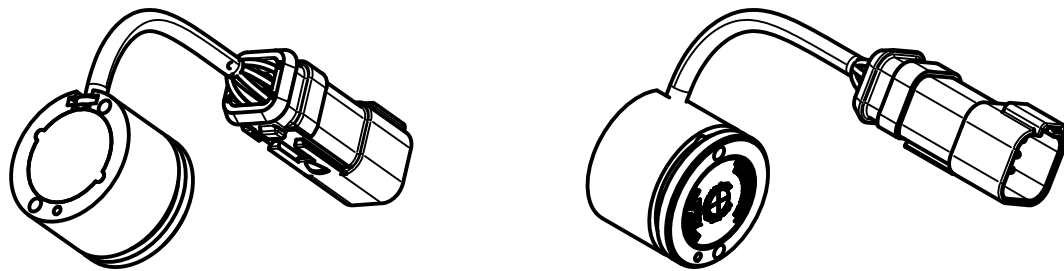
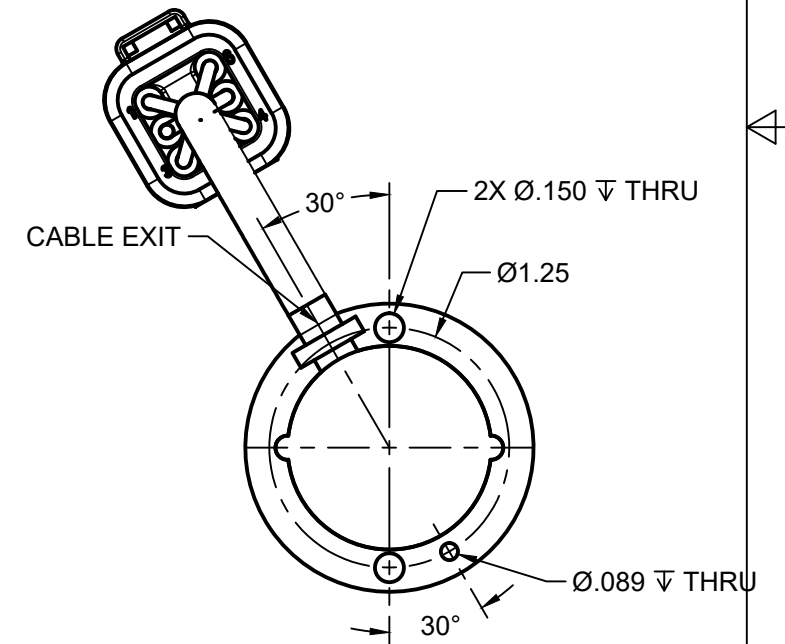
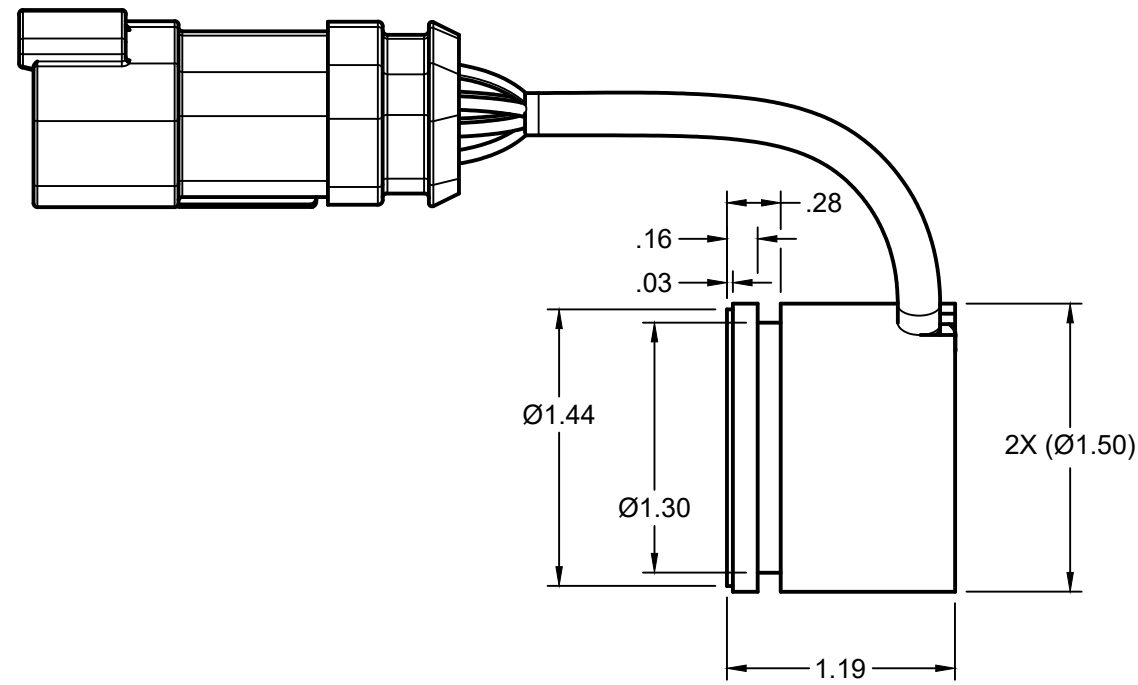
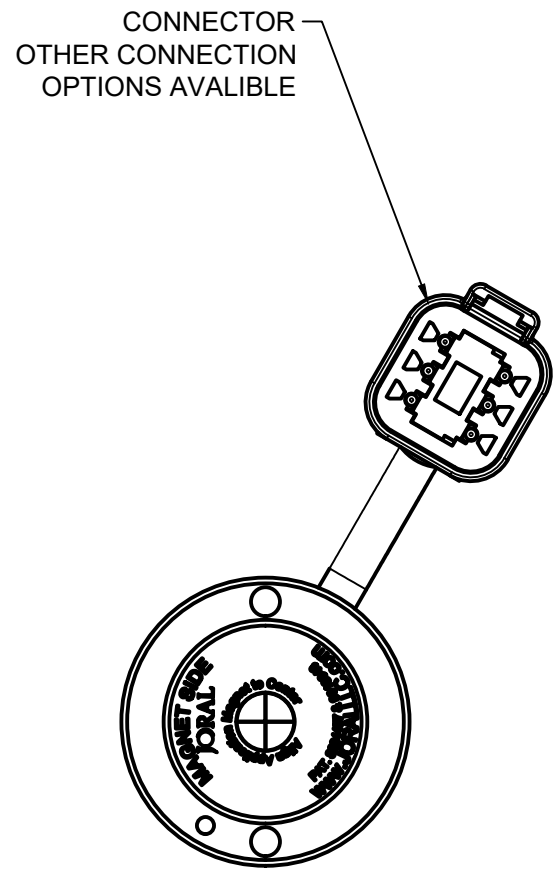
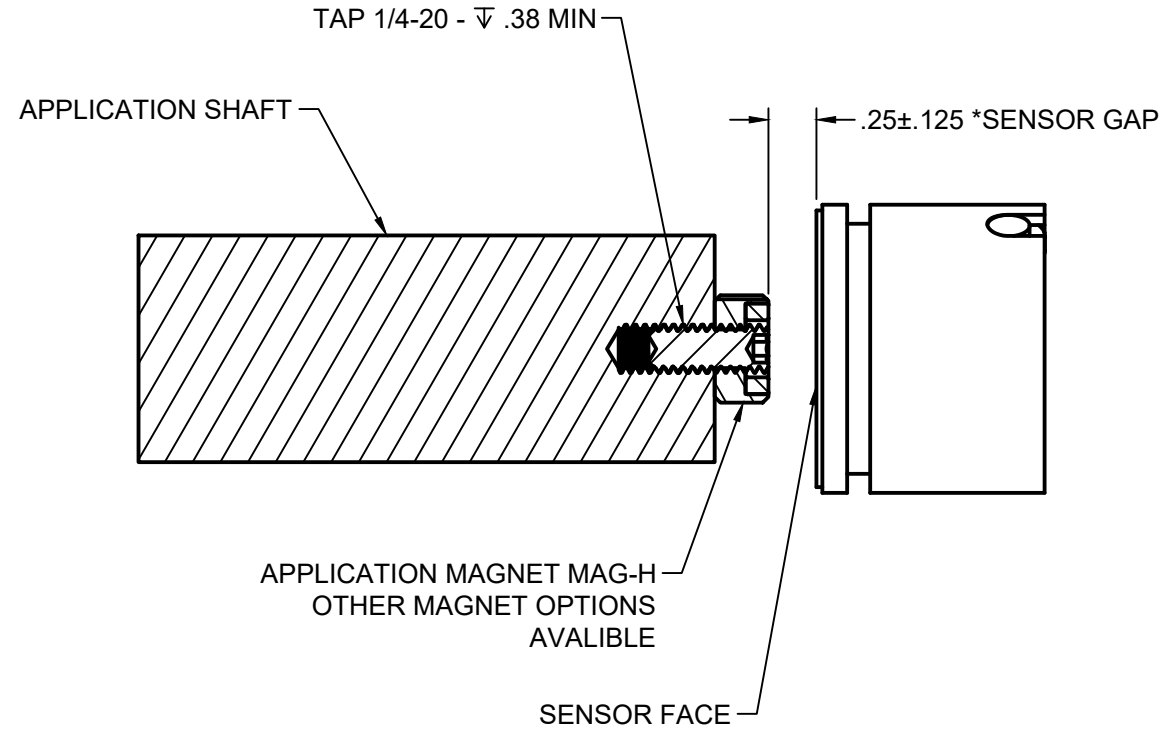




INTERFACE DETAILS AND NOTES:

1. APPLICATION SHAFT Ø.375" MINIMUM WHEN USING MAG-H APPLICATION MAGNET. TAP 1/4-20 A MINIMUM DEPTH OF .375".
2. 0.25" SENSOR GAP DISTANCE IS OPTIMAL FOR NORMAL INSTALLATION. THIS IS DEPENDNT ON MOUNT AND MATERIALS.



ISOMETRIC VIEWS
SCALE:NONE

CONFIDENTIAL - ALL RIGHTS RESERVED DISCLOSURE OR DUPLICATION PROHIBITED		DRAWN: T.WOLFF		DATE: 6/12/2024		 WWW.JORALLC.COM	
UNLESS OTHERWISE SPECIFIED: DIMENSIONS ARE IN DECIMAL INCH		CHECKED: A.MINSTER		APPROVED: 6/12/2024			
 MANUFACTURING TOLERANCES		PART #: HP38-CUST-ASSY				DESCRIPTION: HP38 INTERFACE DETAILS	
.X ±.015	.XX ±.005	.XXX ±.001	ANGLE ±1°	EPICOR #:	REV.	SIZE: B	SCALE: 1:2 SHEET: 1/1